

EventKiosk



User's Guide

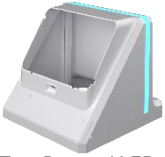
Zebra Printer Kiosk &
No Printer Model

Table of Contents

Product Contents	3
Printer Base Setup	4
Printer	5
Network	6
Printer Paper	7
Middle Section for Printer Kiosk	8
Barcode Scanner for Printer Kiosk (optional)	9
NFC Reader (optional)	10
Top Section for Printer Kiosk	11
No Printer Base Setup	12
Barcode Scanner for No Printer Kiosk (optional)	13
Top Section for No Printer Kiosk	14
iPad Installation	15
Microsoft Surface Installation	16

Product Contents

All Kiosk Variants



Top Part w/ LED



LED Remote



Power Cube



Kiosk Base

No Printer Model

Printer Kiosk Only



ZD620 Printer



2 Part Power Sply



12ft Eth Cable



Middle Section



Printer Base

iPad Use Case Only



iPad 9.7"



iPad Bezel



Angled Lightning Cbl

Microsoft Surface Use Case Only



Surface Tablet



Surface Bezel



Power Cable



USB-C Hub



Angled USB-C

Barcode Scanner (Optional)



Scanner



Charing Dock



DC Cable



NFC Reader



USB Cable

NFC (Optional)

Zebra Printer Kiosk Base Setup

Tip

Relocation once assembled is not suggested.

Tip

Ensure you have a power outlet within proximity of the Kiosk.

Tip

The round button on top of the power cube turns the cube on and off. Ensure it is set to ON. (down position)

1. Place the Kiosk Base on a flat surface.

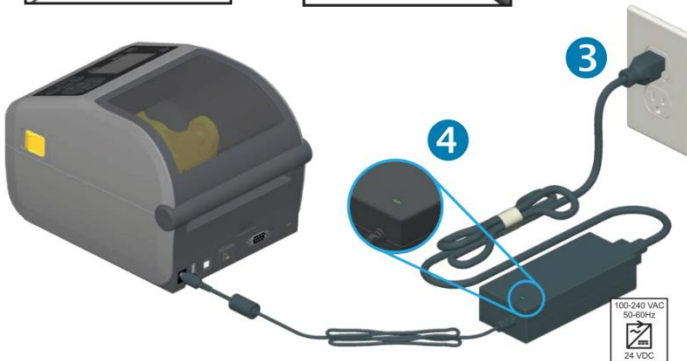
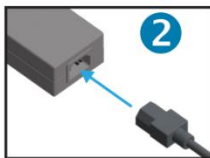


2. Position the power cube on top of the Velcro Tape close to the indentation of the Kiosk Base. Ensure both power outlets are accessible. Plug the cable into a wall outlet.



Zebra Printer Kiosk Base Setup - Printer

- Place the Zebra ZD620 Printer on top of the base. Connect the DC power plug in the back of the printer. Move the power cable counterclockwise around the printer and plug the power cable into the power cube.



Tip

Ensure no cables are hanging outside of the Kiosk, use Velcro ties to keep the cables neatly together.

Tip

At this time, powering on the printer is suggested since it will soon be covered.



Zebra Printer Kiosk Base Setup - Printer

[Optional Rental Router Setup Link](#)

Cradlepoint (US/CAN)



TP-Link



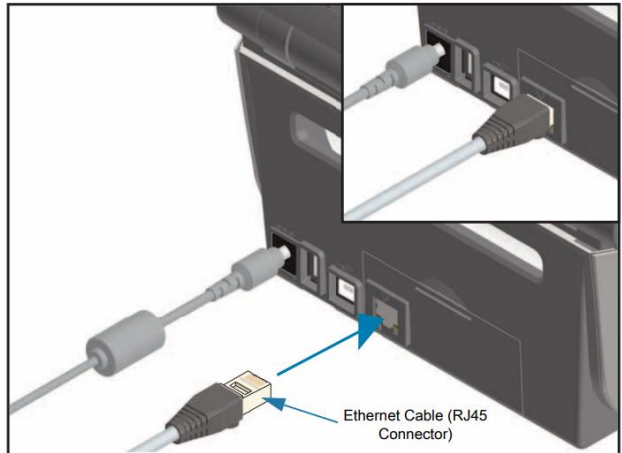
Cellular TP-Link MR200 (EUROPE)



Mobile Cellular Hotspot Router



4. Plug in the Ethernet Cable to the back of the Zebra ZD620 Printer.



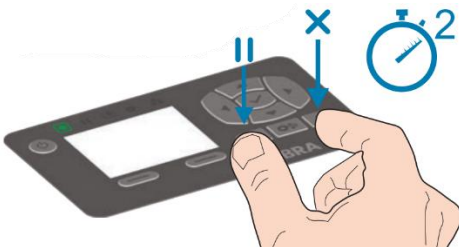
- 2a. If a Wi-Fi Router, outside of the kiosk, is being used, move the other end of the Ethernet Cable outside of the kiosk, along with the power cable and plug it into your external Wi-Fi Router.
- 2b. If a Mobile Wi-Fi Hotspot is being used, place it inside the kiosk and plug the other end of Ethernet Cable into the Mobile Wi-Fi Hotspot.

Zebra Printer Kiosk Base Setup - Paper

- Place the Direct Thermal Badge stock below the printer. Open the printer and feed the paper through the printer and cutter. Ensure the blank side is facing up, and the arrow on the opposite side is facing to the front in the feed direction.



- Firmly close the printer and calibrate it. Press Pause + Cancel Buttons for 2 seconds. The printer will calibrate now.



Video Help

Scan the QR-Code to watch learn more about proper badge loading and printer calibration.



Tip

Some software applications allow you to calibrate from within the App.

Tip

Note down the IP address on the printer display. It is needed to locate the printer within your application. An IP address only shows if the printer is connected to a Wi-Fi router.

Zebra Printer Kiosk Middle Setup

Tip

Keep all cables inside and neatly together for the cover to fit properly on the base.

7. Run the cable through the corner hole of the middle kiosk section. Plug the power cable from the “Manto” USB Charging Station into the Power Cube on the base.



8. Place the middle section of the kiosk on top of the Zebra base section. Ensure that the paper output of the printer aligns with the output slot of the kiosk.
9. Place the “Manto” USB Charging Station on the rear right corner on top of the middle section and plug the other side of the power cable in.



OPTIONAL - Scanner Setup

10. Place the Socket Mobile Scanner Charging Dock on top of the middle section of the kiosk. Plug in the DC power cord in both the dock and the USB Station.
11. Setup the scanner according to your use case.
 - Reset the scanner
 - Choose between iOS Mode (iPad) and HID Mode (Windows)
 - Do not forget to setup the scanner to "Auto-Scan-Mode".
 - Please access the setup document to the right using the QR code.
12. Pair the scanner via Bluetooth to your iPad or Windows Surface.
13. Place the Socket Mobile Barcode Scanner into the dock and power it on.

[Need help setting up the scanner?](#)
[Scan the QR Code](#)



Tip
Test the "auto scan" mode by waving in front of the scanner. If the scanner does not turn on when detecting motion, you may want to repeat the setup and double check the power connection.



OPTIONAL – NFC Reader Setup

Tip

Ensure the software application works with the NFC reader.

Depending on the software, the NFC readers needs to be connected via Bluetooth in the settings of the Tablet or withing the software application.

Tip

When connecting Bluetooth devices to a tablet PC, power them on one after the other and establish the connection prior to powering on the next Bluetooth device.

1. Ensure the NFC reader is set to BLUETOOTH Mode.
2. On the inside of the top part of the kiosk, open the right compartment and place the NFC reader inside.
3. Plug in the USB cable to the NFC reader.



Kiosk Top Setup

1. Position the Top of the Kiosk onto the middle section.
2. Plug the USB cable from the LED light inside the top into the USB Charging Station.
3. Plug the USB Cable from the optional NFC Reader and optional credit carder into the USB Charging Station.



Did you Know?

You can turn the top of the kiosk 180 degrees around. This position allows attendees to check-in on their own and event staff receives the badge and hand it out to the attendee.

> Turn to page 15/16 for Tablet PC installation

No Printer Kiosk Base Setup

Tip

Ensure you have a power outlet within proximity of the Kiosk.

Tip

The round button on top of the power cube turns the cube on and off. Ensure it is set to ON. (down position)

1. Place the Kiosk Base on a flat surface.



2. Position the power cube on top of the Velcro Tape close to the indentation of the Kiosk Base. Ensure, that both power outlets are accessible. Plug the cable into a wall outlet.



No Printer Kiosk Scanner Setup (optional)

3. Place the Socket Mobile Scanner Charging Dock on top of the pedestal. Plug in the DC-Power Cord in both the dock and the USB Power Cube.
4. Setup the scanner according to your use case.
 - Reset the scanner
 - Choose between iOS Mode (iPad) and HID Mode (Windows)
 - Do not forget to setup the scanner to "Auto-Scan-Mode".
 - Please access the setup document to the right using the QR code.
5. Pair the scanner via Bluetooth to your iPad or Windows Surface.
6. Place the Socket Mobile Barcode Scanner into the dock and power it on.



[Need help setting up the scanner?](#)
[Scan the QR Code](#)



[Tip](#)
Test the "auto scan" mode by waving in front of the scanner. If the scanner does not turn on when detecting motion, you may want to repeat the setup and double check the power connection.

No Printer Kiosk Top Setup

7. Position the top of the Kiosk onto the no printer base.
8. Plug the USB cable from the LED light inside the top into the USB Charging Power Cube.
9. Plug the USB Cable from the optional NFC Reader and optional credit carder into the USB Charging Station.



Are you using the optional NFC feature?

Turn to page 10 to learn how to setup the NFC reader.

iPad Installation

1. Slide the iPad into the Bezel.



2. Once inside the Bezel, plug in the angled Lightning Cable.



3. Plug in the USB Cable to the USB Charging Station inside the Kiosk.

4. Place the iPad Bezel on top of the Kiosk and firmly press to make sure it's not falling off.



Tip

The Sleep/Wake button of the iPad is accessible from the outside through a small slot. A long thin pen is needed to reach in. If not done at this point, powering on the iPad is recommended.

Microsoft Surface Installation

1. Slide the Tablet into the Bezel.
2. Once inside the Bezel, plug in the power cord of the Microsoft Surface and connect it to power.
3. Plug in the USB Cable to the USB Charging Station inside the Kiosk.
4. Place the Surface Bezel on top of the Kiosk and firmly press to make sure it is not falling off.



USB Connection
If a device such as the Zebra Printer requires a direct connection to the Windows Surface the angled USB-C adapter together with the USB Hub can be plugged in.

